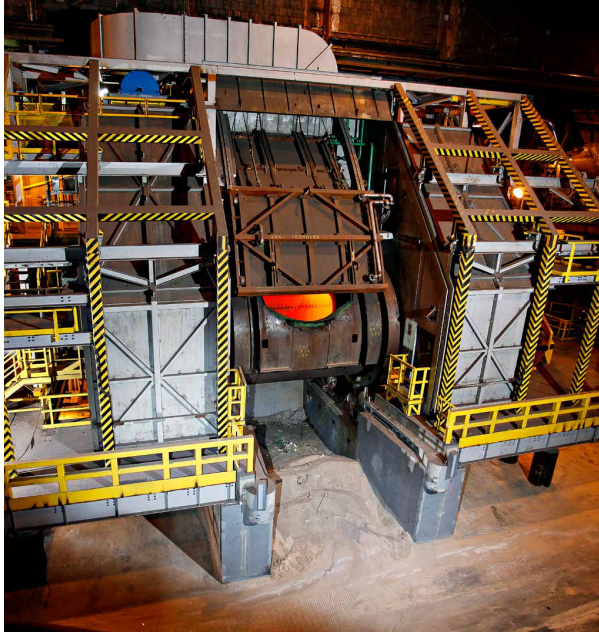


Clean AER Project: New Facilities



Our two new converters have primary and secondary hoods that capture SO₂ gas from the converting process in the Smelter.



The Converter Wet Gas Cleaning plant now captures 85% of the SO₂ emissions previously emitted by the Superstack.



This new Baghouse and Fan Building acts like a giant vacuum cleaner and will reduce metals particulate emissions by 40%



The two new 137 metre (450 feet) stacks will be more efficient to operate than the Superstack. Natural gas consumption at the Smelter is expected to drop by nearly half once the Superstack is no longer in service.