



Fundão dam: The reparation to date

November 13th, 2020

“This presentation may include statements that present Vale's expectations about future events or results. All statements, when based upon expectations about the future and not on historical facts, involve various risks and uncertainties. Vale cannot guarantee that such statements will prove correct. These risks and uncertainties include factors related to the following: (a) the countries where we operate, especially Brazil and Canada; (b) the global economy; (c) the capital markets; (d) the mining and metals prices and their dependence on global industrial production, which is cyclical by nature; and (e) global competition in the markets in which Vale operates. To obtain further information on factors that may lead to results different from those forecast by Vale, please consult the reports Vale files with the U.S. Securities and Exchange Commission (SEC), the Brazilian Comissão de Valores Mobiliários (CVM) and in particular the factors discussed under “Forward-Looking Statements” and “Risk Factors” in Vale’s annual report on Form 20-F.”

“Cautionary Note to U.S. Investors - The SEC permits mining companies, in their filings with the SEC, to disclose only those mineral deposits that a company can economically and legally extract or produce. We present certain information in this presentation, including ‘measured resources,’ ‘indicated resources,’ ‘inferred resources,’ ‘geologic resources,’ which would not be permitted in an SEC filing. These materials are not proven or probable reserves, as defined by the SEC, and we cannot assure you that these materials will be converted into proven or probable reserves, as defined by the SEC. U.S. Investors should consider closely the disclosure in our Annual Report on Form 20-K, which may be obtained from us, from our website or at <http://http://us.sec.gov/edgar.shtml>.”

disclosure

Agenda

- 1 Governance
- 2 Environment
- 3 Resettlement
- 4 Indemnification
- 5 *Going Beyond Reparation*
- 6 Closing



Governance

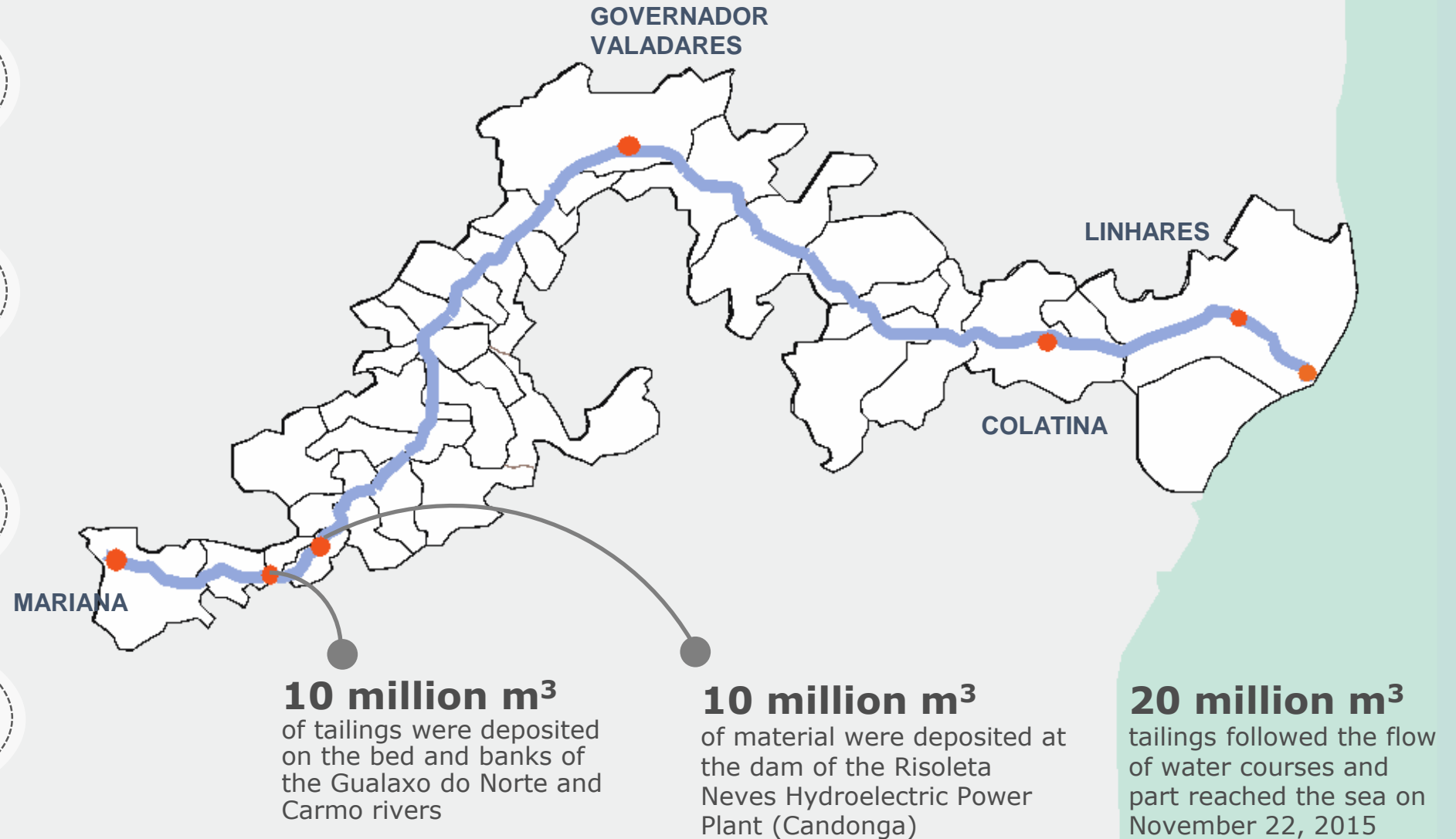
Fundão dam breach

19 fatalities

39 municipalities

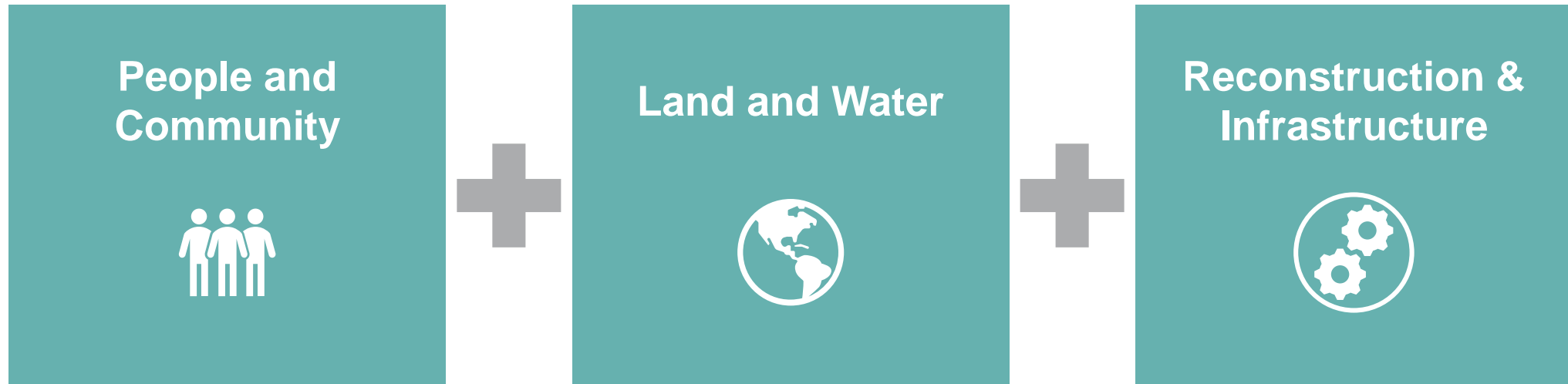
670 km impact

40 million m³ of tailings



Our goal is to fully repair the damage caused by 2025

42 programs



Our strategy



Build the houses

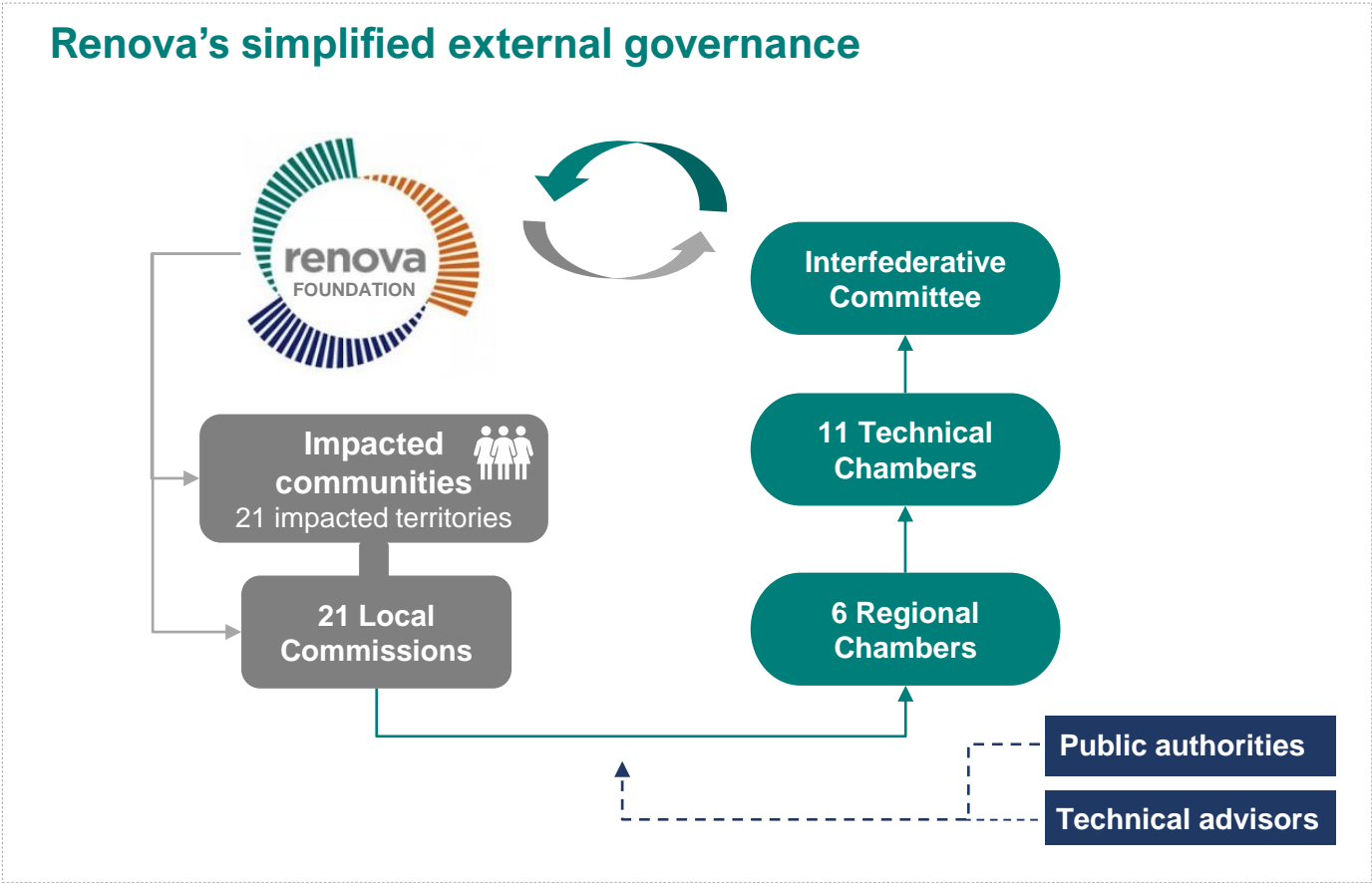
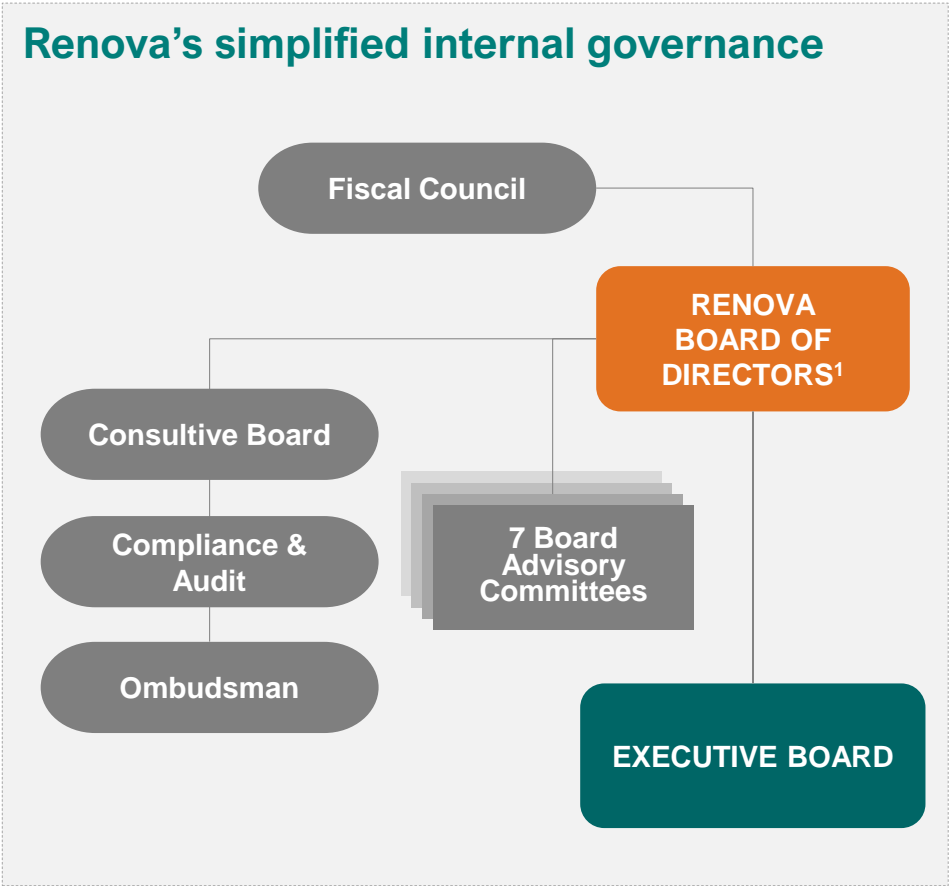


Pay the people



Lift the fishing ban

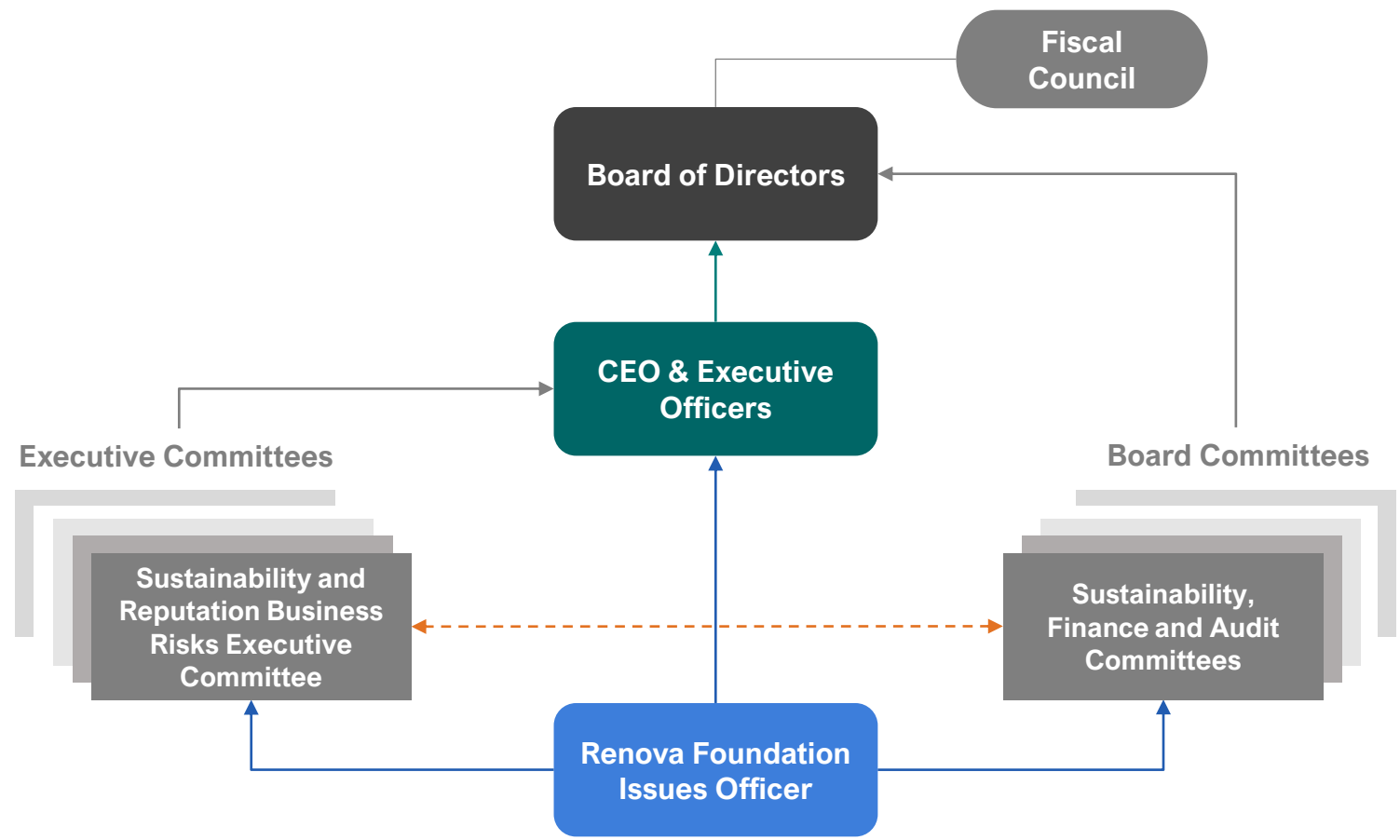
Renova Foundation's activities are framed within a participatory and complex governance model



¹ Composed by the affected people, Vale, BHP and the Interfederative Committee.

Reparation activities are closely overseen by Vale's senior management and Board members

Vale's simplified governance structure



2

Environment

Environmental recovery

Erosion control and riverbank rehabilitation

Priority Area 15 – Barra Longa district, Mariana, MG



October 2016



March 2017

Environmental recovery


Erosion control and riverbank rehabilitation

Before



After



An aerial photograph showing a large-scale land restoration project. A river flows through the center, with terraced fields on either side. The fields are divided into rectangular plots, some of which are covered in green vegetation, while others are bare soil. A small blue and white vehicle is visible on a dirt road in the lower left. The surrounding area is densely forested.

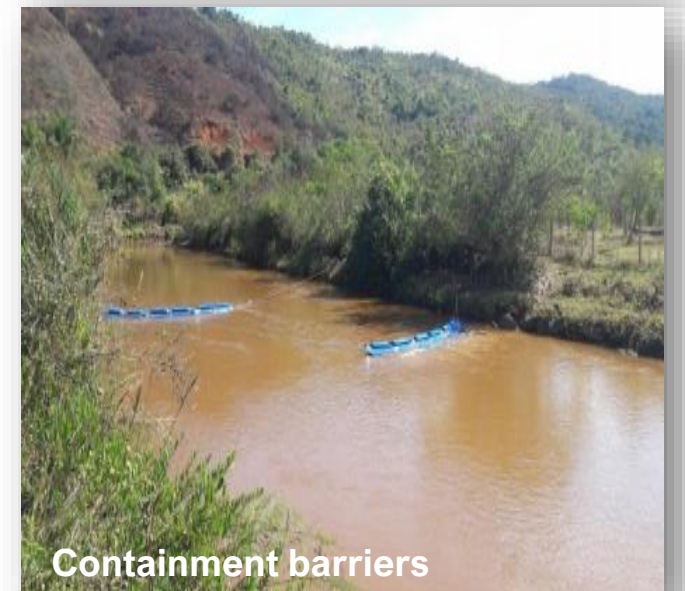
Bioengineering, erosion control and revegetation

1,500 ha of land recovered

- Recovery process started in 1,500 springs
- Payment for environmental services to 270 rural producers
- 1 million seedlings used

- Successful results confirmed by educational institutions (Federal University of Viçosa)
- Main challenge is the control of livestock in areas under recovery

Tailings management with habitat restoration projects



Water monitoring shows turbidity at levels prior to the breach and within legal parameters

Doce River turbidity

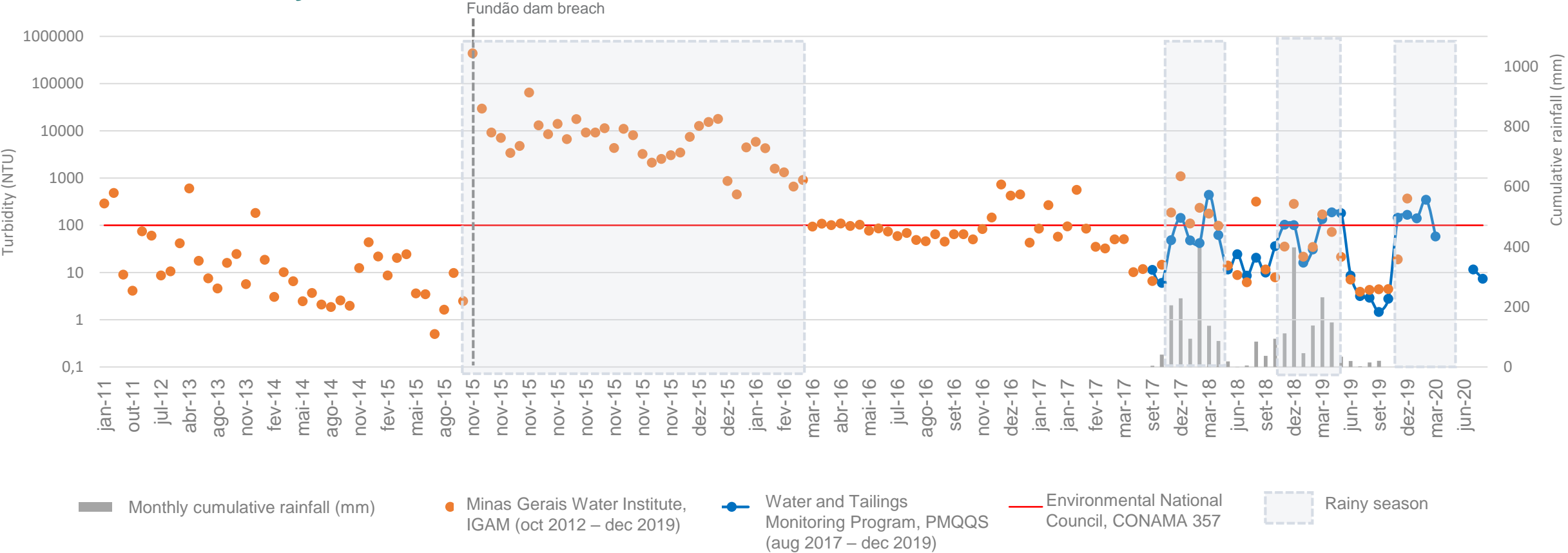



Chart available at this [link](#), in Portuguese.

3

Resettlement

An aerial photograph showing a large-scale construction project in a mountainous region. The foreground shows a cleared area with dirt roads and some early-stage building foundations. The middle ground features a winding river and a small lake. The background consists of rolling hills and mountains under a clear blue sky with scattered clouds.

Active participation with individual opinion of 470 families in all stages of the resettlement process through customized projects

- *Choice of location*
- *Urban design*
- *Lot definition*
- *Basic project*
- *Issuance of permit*
- *Executive project*
- *Beginning of construction*

Overall timeline

2016 / 2017

- **Mar16:** Agreement signed
- **Aug16:**
 - Renova Foundation creation
 - Technical advisors mobilized
- **Fev17:** Selection of “host area” of Bento Rodrigues


2018

- **Aug18:** Issuance of Bento Rodrigues environmental license
- **Sep18:** Beginning of Bento Rodrigues infrastructure works
- **Dec18:** Definition of resettlement guidelines (customized deliveries)

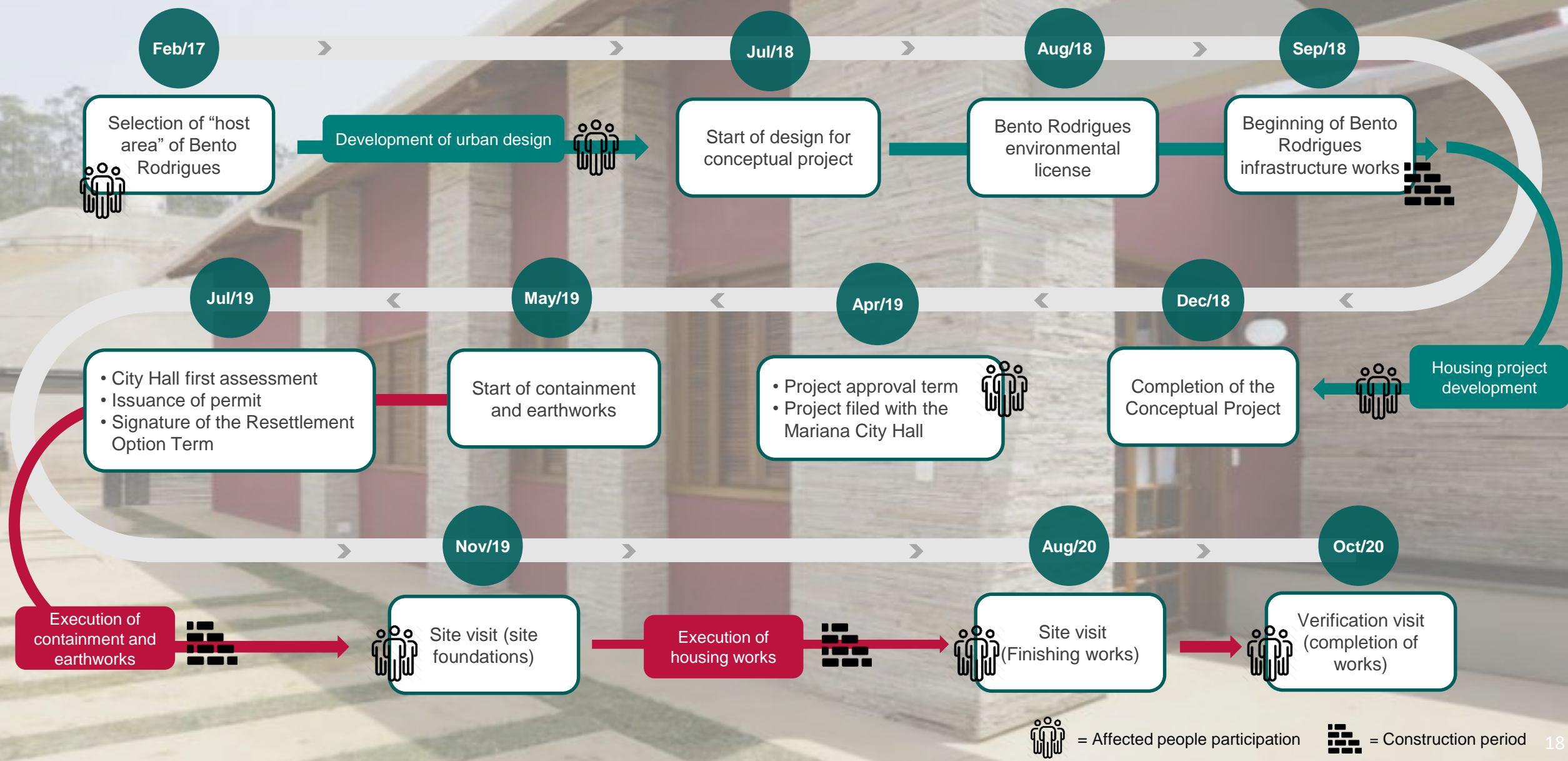
2019

- **Mar19:** Paracatu Installation License
- **May19:** Conclusion of underground investigation in Bento Rodrigues
- **Jul19:** Hiring of construction companies

2020

- **Jan20:** Definition of Gesteira Conceptual Plan by the Commission of Affected People and Technical Advisory
- **Mar20:** Construction works halted due to Covid-19
- **Jul20:** Resumption of works
- **Oct20:** 1st house  delivered on the Family Resettlement Program

After project approval, house delivery takes approximately 12 months



Bento Rodrigues resettlement

Construction standards



New standards





Bento Rodrigues

211 families
opted for collective
resettlement

117 projects
with permits issued

140 projects
filed with Mariana's city hall

7 houses
with construction ongoing



School

Service Station

Bento Rodrigues

54%	99%	42%	94%	89%	95%	97%
school execution	landscaping	retaining walls	rain drainage	sewerage system	treated water supply	pavement



Paracatu de Baixo

97 families
opted for collective
resettlement

50 conceptual projects
concluded + 20 ongoing

8 projects
with permits issued

**Houses
construction to begin**



Paracatu de Baixo

Schools
foundation

100%

schools foundation

92%

landscaping

45%

containment

42%

rain drainage

25%

sewerage
system

33%

treated water
supply

15%

pavement

8 families

with indemnification ratified

26 families

opted for collective resettlement

- 37 scheduled visits (34 families), Jul/22
- Partially approved service guidelines (12/73)
- Conceptual project reviewed with the affected committee
- Pending decision/approval regarding the conceptual project



Individual assistance

129 families

49 properties

for renovation and construction
sites were purchased

1 family

house delivered on Oct 22nd



4

Indemnification

Indemnification status

Emergency financial aid ¹

Mariana			Total		
# Main beneficiary	# Relatives	Amount	# Main beneficiary	# Relatives	Amount
574	712	R\$ 57 MM	14,754	18,133	R\$1.44 Bn

Indemnizations¹

Mariana		Water damage		General damage	
# Families	Amount	# People	Amount	# Families	Amount
390	R\$ 166 MM	270,312	R\$ 283 MM	10,201	R\$ 920 MM

Novel System

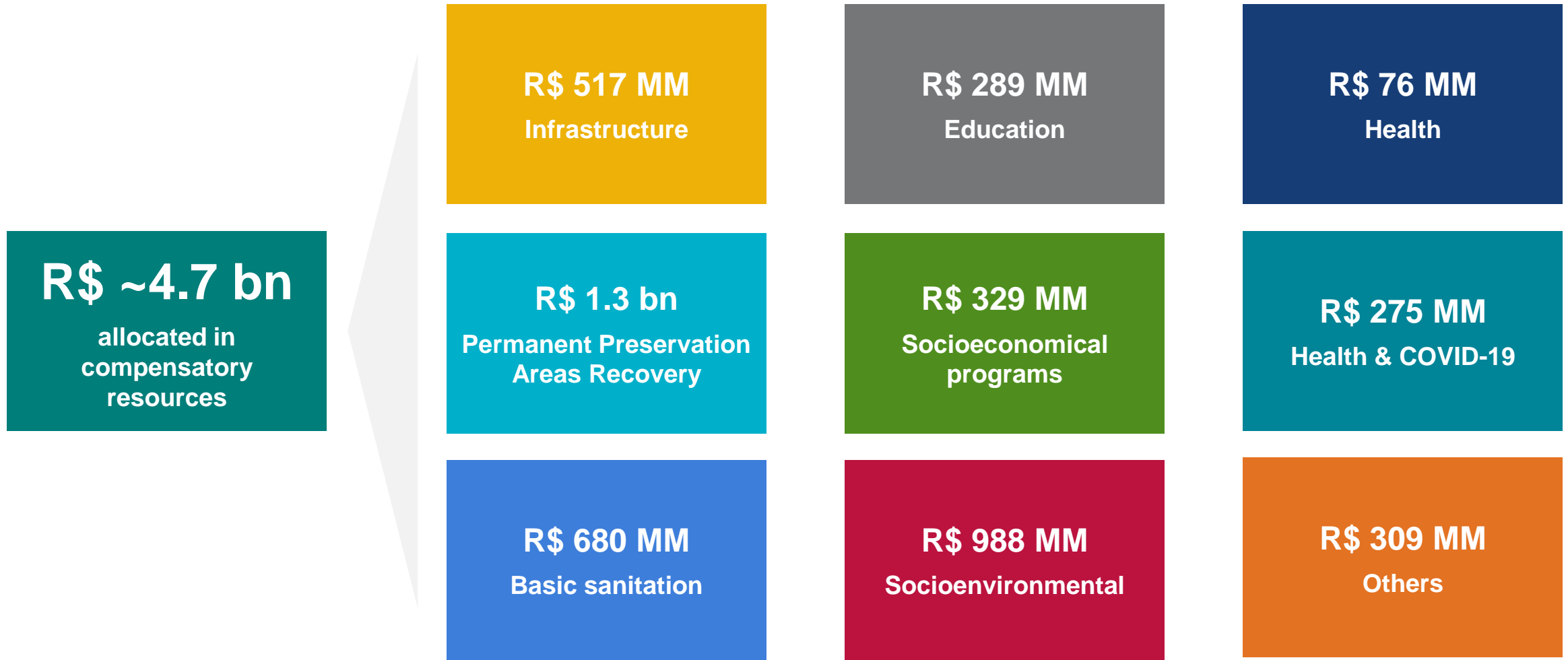
Registered Requirements	Validated Requirements	Payments
4,685	1,962	251

¹ Amounts disbursed until September 30th, 2020.

5

**Going Beyond
Reparation**

Going beyond reparation



6

Closing

Vale has already fulfilled a big part of its commitment and will continue to do so

All **42 programs** are in progress, including remedial and compensatory actions

R\$ 10 billion already spent



